

# Electrical Troubleshooting

## Troubleshooting Flowchart (cont'd)

Self-diagnosis **D4** indicator light blinks five times.

Turn the ignition switch ON.

Observe the A/T gear position indicator and select each position separately.

Do any indicators fail to light when shifting through all positions?

YES

See A/T gear position indicator inspection (see [section 23](#)).

NO

Turn the ignition switch OFF.

Connect the Test Harness between the PCM and connectors (14-48 and 49).

Turn the ignition switch ON.

Shift to other than **R** position.

Measure the voltage between the A13 and A3/A4 terminals.

Is there battery voltage?

NO

Check for short in CRN/RED wire between the E13 terminal and the A/T gear position switch or A/T gear position indicator. If wire is OK, check for loose PCM connectors. If necessary, substitute a known-good PCM and recheck.

YES

Shift to other than **N** and **P** position.

Measure the voltage between the B7 and A3/A4 terminals.

Is there battery voltage?

NO

Check for short in LT CRN wire between the B7 terminal and the A/T gear position indicator or in GRN/WHT or GRN wire between the A/T gear position indicator and the A/T gear position switch. If wire is OK, check for loose PCM connectors. If necessary, substitute a known-good PCM and recheck.

YES

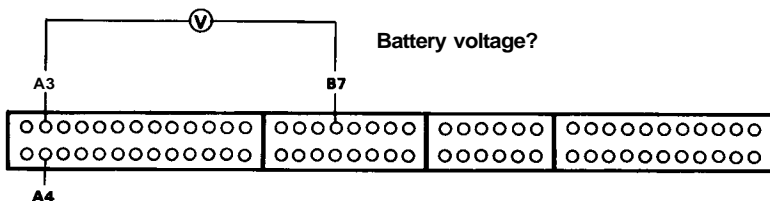
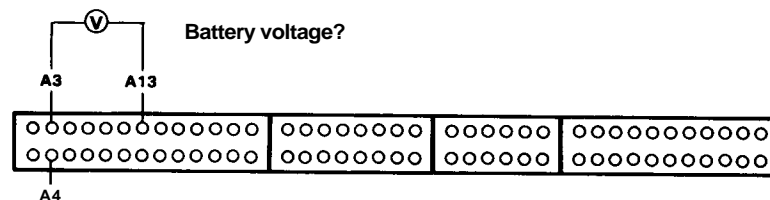
To page [14-57](#)

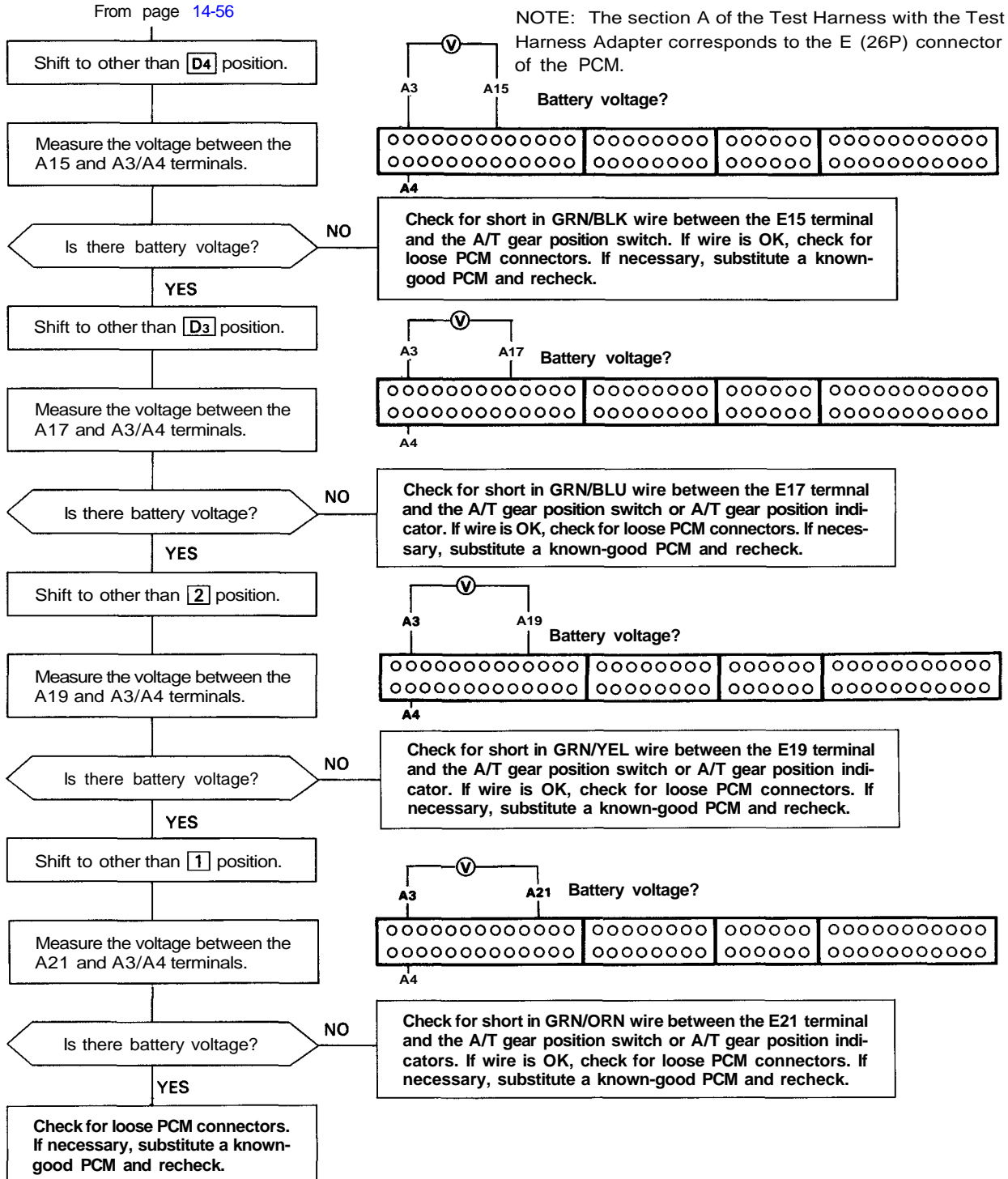
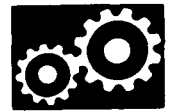
### Possible Cause

- Short in A/T gear position switch wire
- Faulty A/T gear position switch

NOTE: Code 5 is caused when the PCM receives two gear position inputs at the same time.

NOTE: The section A of the Test Harness with the Test Harness Adapter corresponds to the E (26P) connector of the PCM.





(cont'd)